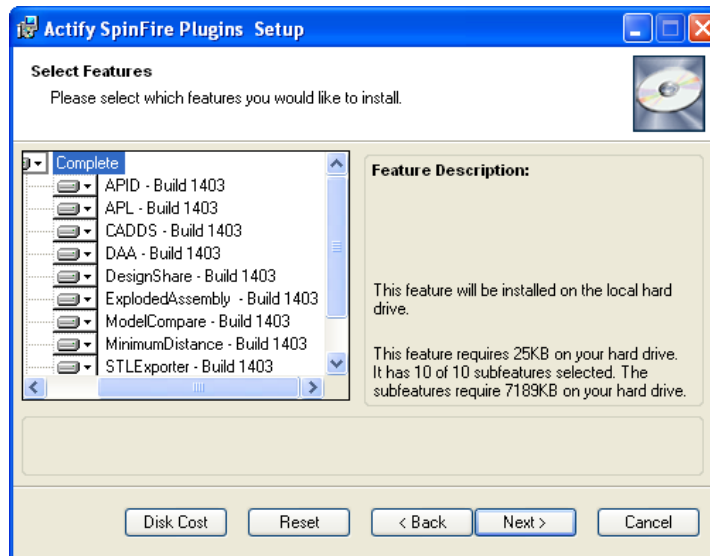


SpinFire Plug-in Manager (Build 1403) Release Notes

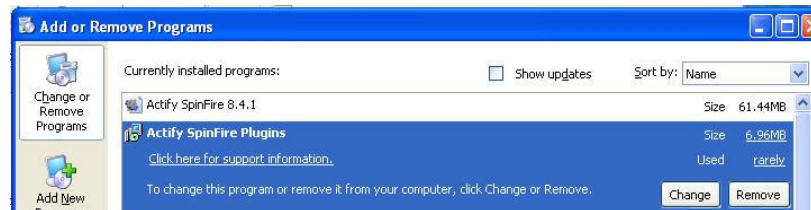
February 5, 2010

Introduction

SpinFire Plug-in Manager is a utility that contains all available plug-ins from Actify. The Plug-in Manager allows you to install and manage plug-ins as a group. No longer do you have to download and install each plug-in separately. The utility allows you to install one, some or all plug-ins.



Once installed, the Add/Remove listing only has one entry for all the plug-ins.



Selecting the **Change** option allows you to install or remove plug-ins as necessary. The **Remove** option will remove all installed Actify plug-ins in one step.

The Plug-in Manager is a separate install from the SpinFire install and is run after installing SpinFire.

The plug-ins included are:

- Automatic Part ID
- Automatic Parts List
- CADDs
- DAA
- DesignShare

- Exploded Assembly **Now**
- Model Compare
- Minimum Distance **Now**
- STL Exporter
- Cross Section Plus

All plug-ins are updated to have the same build number.

The Plug-in Manager only works with SpinFire 8.4.1. The other versions of the plug-ins for SpinFire 8.3 will still be available on the Actify website.

The plug-in can be run in silent mode using the following command.

Msiexec /i {path to .msi} TRANSFORMS={path to .mst} /qr

For example if the mis and mst are in C:\Temp the command would look like

msiexec /i C:\Temp\PluginMgr.msi TRANSFORMS=C:\Temp\plugin.mst /qr

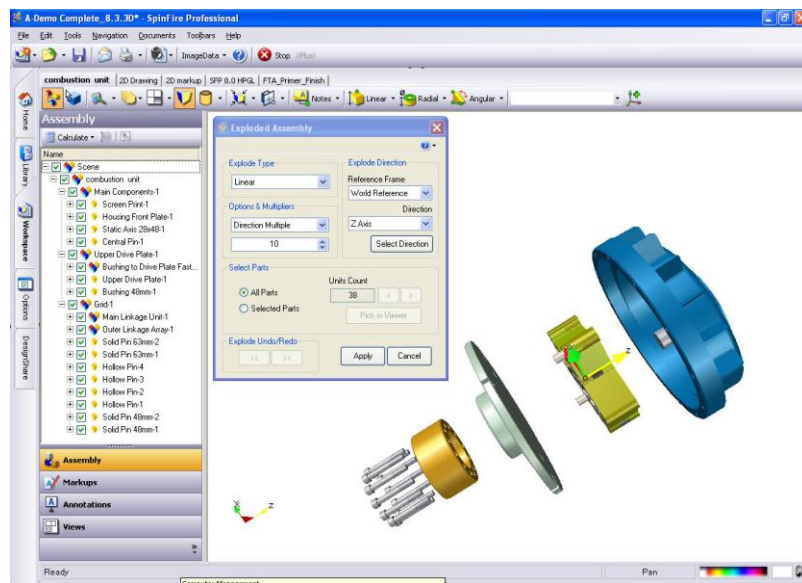
Exploded Assembly Plug-in

To simplify the process of creating exploded assemblies for documentation or presentations, the exploded assembly plug-in simplifies and speeds up the process of moving parts or sub-assemblies. The parts can be moved using one of three options.

- Linear – Moves all parts in the same direction.
- Radial – Moves all parts away from a central axis.
- Spherical – Moves all parts away from a central point.

The parts can be moved equal distances or relative to their location in the assembled location (move more the further away from the origin and less the closer to the origin).

To better control movement, the user can apply the movement at the part or sub assembly level. Moving a select few or all the parts.



Minimum Distance Plug-in

Enhancing the measurement capabilities of SpinFire, the Minimum Distance plug-in computes and displays the minimum distance between the selected entities. The selection could be between sub assemblies, parts and sets of surfaces, thus allowing you to find absolute minimums and local minimums.

The tool is easy to use. You start by selecting the first set of entities and then select the second set of entities and select the Compute button. The distance is displayed like any other measurement dimension.

